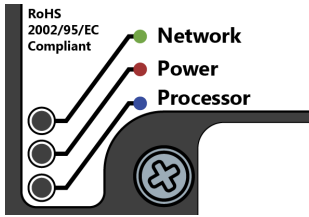


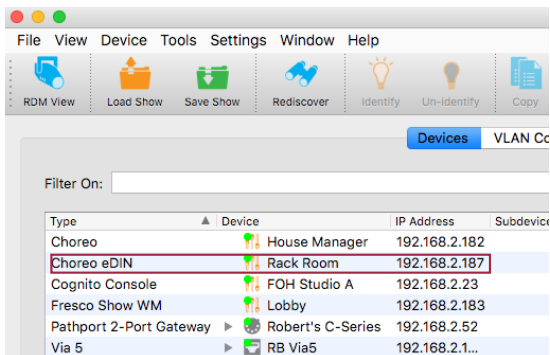
Installation Guide

NOTE: Do not install Choreo eDIN on a network you do not manage. Firewall and security settings such as MAC Address filtering are the responsibility of the installer. Choreo's VNC Server is "open" so security must be managed by the Network Administrator on the network itself.

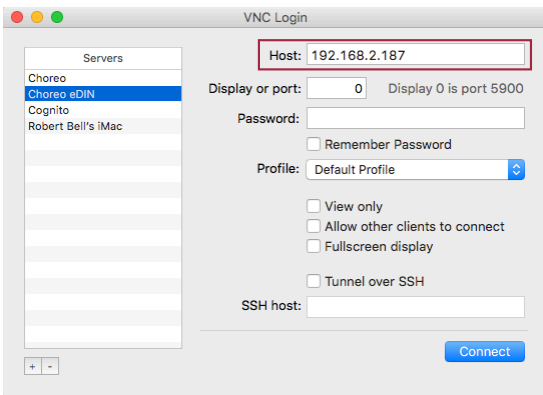
1. Physically install the controller on the DIN rail and connect power using the 24VDC power connector or connect to a PoE Switch.
2. You should immediately see the red Power LED light solid. Within a few seconds, the blue Processor LED should flash its heartbeat.



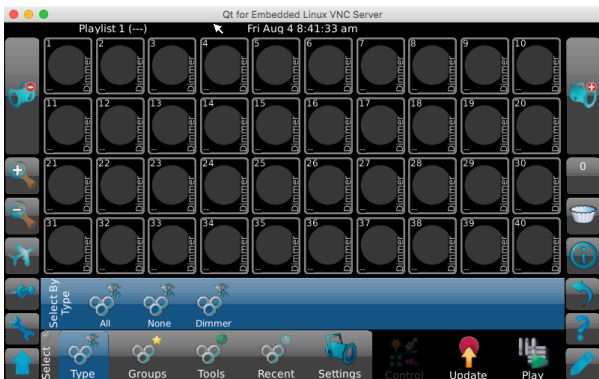
3. If the Ethernet cable is connected to a network, the green Network LED may or may not show activity depending on whether your network has a DHCP server on it.
4. On a computer on the same network, launch Pathscope. The Choreo eDIN should appear in the **Devices** list. In the image below, note its IP address has been allocated by a DHCP server on this network and it is 192.168.2.187. If you don't see the Choreo eDIN in the list, proceed to **Step A** below.



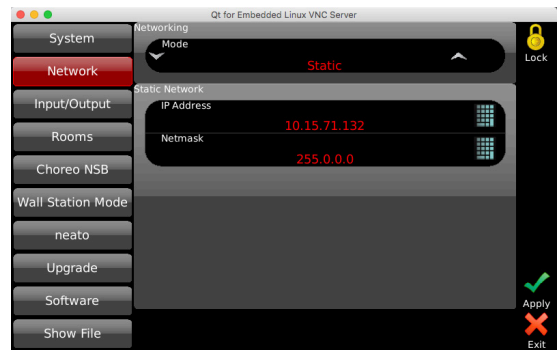
5. Launch a VNC viewer such as Chicken, Mocha or Tiger on your PC or smart phone or tablet, which is on the same network and in the same IP range as the Choreo eDIN. Other VNC clients may work. Make sure they support "touch and drag" if you want to use Choreo's Memory Sliders. Some free clients don't, but for a small fee you can add that feature.
6. Enter the IP address of the Choreo eDIN where the VNC Client asks for the **Host**. Leave the **Password** blank. Set other options as appropriate for your purpose.



7. Press **Connect** to see the Choreo's Display.

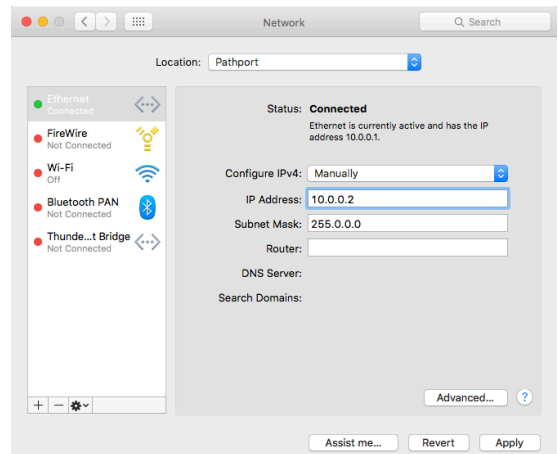


8. If necessary, click the **Wrench** button on the left side of the Choreo display to open **Setup**, then click on **Network**. Change the settings as necessary but be aware you may lose connectivity through the viewer until you adjust your device's IP settings to match Choreo's.

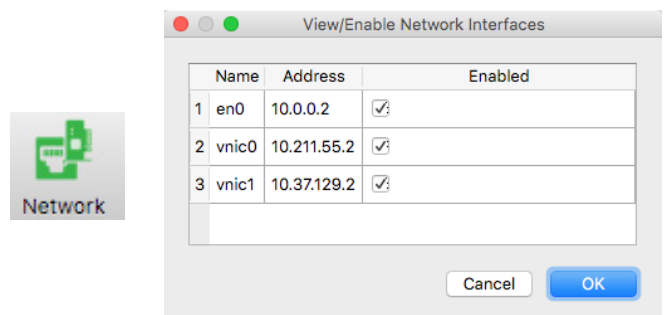


When Choreo is not discovered in Pathscope

- A. If Choreo eDIN is not discovered in the **Devices** list of Pathscope, the IP address setting on your PC does not match Choreo's. Open your device's IP settings and **manually** set the IP address to 10.0.0.2 with a Subnet Mask of 255.0.0.0. Do not enter a gateway or router address.



- B. As Choreo eDIN is shipped with a static "Pathport" IP of 10.x.y.z, it should now appear in the list when you relaunch Pathscope. Continue from **Step 4** above.
- C. If you still do not see Choreo, press the **Network** button in Pathscope's toolbar to ensure your NIC is in the list and it is Enabled. Once a 10.x.y.z NIC is enabled, Choreo eDIN should appear in the list and you can continue from **Step 4** above to configure the network as needed.





READ AND FOLLOW ALL SAFETY INSTRUCTIONS!
SAVE THESE INSTRUCTIONS AND DELIVER TO OWNER AFTER INSTALLATION

- To reduce the risk of death, personal injury or property damage from fire, electric shock, falling parts, cuts/abrasions, and other hazards please read all warnings and instructions included with and on the fixture box and all fixture labels.
- Before installing, servicing, or performing routine maintenance upon this equipment, follow these general precautions.
- Installation and service should be performed by a qualified licensed electrician.
- Maintenance should be performed by qualified person(s) familiar with the products' construction and operation and any hazards involved. Regular maintenance programs are recommended.
- DO NOT INSTALL DAMAGED PRODUCT! This product has been properly packed so that no parts should have been damaged during transit. Inspect to confirm. Any part damaged or broken during or after assembly should be replaced.
- These instructions do not purport to cover all details or variations in equipment nor to provide every possible contingency to meet in connection with installation, operation, or maintenance. Should further information be desired or should particular problems arise which are not covered sufficiently for the purchaser's or owner's purposes, this matter should be referred to Pathway Connectivity.

- WARNING: RISK OF ELECTRIC SHOCK**
- Disconnect or turn off power before installation or servicing.
 - Verify that supply voltage is correct by comparing it with the product information.
 - Make all electrical and grounded connections in accordance with the National Electrical Code (NEC) and any applicable local code requirements.
 - All wiring connections should be capped with UL approved recognized wire connectors.
 - All unused connector openings must be capped.

- WARNING: RISK OF BURN OR FIRE**
- Do not exceed maximum wattage, ratings, or published operating conditions of product.
 - Do not overload.
 - Follow all manufacturer's warnings, recommendations and restrictions to ensure proper operation of product.

- CAUTION: RISK OF PRODUCT DAMAGE**
- Electrostatic Discharge (ESD): ESD can damage product(s). Personal grounding equipment must be worn during all installation and servicing of the unit.
 - Do not touch individual electrical components as this can cause ESD and affect product performance.
 - Do not stretch or use cable sets that are too short or are of insufficient length.
 - Do not tamper with contacts.
 - Do not modify the product.
 - Do not change or alter internal wiring or installation circuitry.
 - Do not use product for anything other than its intended use.
 - If installing wiring systems: Materials and component parts of a manufacturing wiring system as described in Article 604 of the National Electric Code and Underwriters Laboratories Standard for Safety #183 MUST BE installed.
 - For interior use only. Not for damp or wet locations. See data sheet for ambient temperature and humidity operating conditions.

- WARNING: RISK OF INJURY**
- Wear gloves and safety glasses at all times when installing, servicing or performing maintenance.

Failure to follow any of these instructions could void product warranties. For a complete listing of product Terms and Conditions, please visit www.pathwayconnect.com.